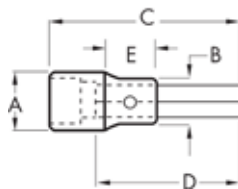


GEARWRENCH® 3/8" Drive SAE/Metric Hex Bit Sockets

- Heat Treated Socket Bases for Durability and Serviceability
- Professional, Full Polish Chrome



Cat. No.	UPC No.	Packaging	Fastener Size	Dim. A: Drive End	Dim. B: Nose Diameter	Dim. C: Overall Length	Dim. D: Bit Length	Exposed Bit Length	Product Weight
80410	099575804106	Carded	1/16 in	0.688 in	0.590 in	1.653 in	0.984 in	0.591	0.09 lb
80411	099575804113	Carded	5/64 in	0.688 in	0.590 in	1.653 in	0.984 in	0.591	0.11 lb
80412D	099575804120	Carded	3/32 in	0.688 in	0.590 in	1.653 in	0.984 in	0.591	0.13 lb
80413	099575804137	Carded	7/64 in	0.688 in	0.590 in	1.653 in	0.984 in	0.591	0.13 lb
80414	099575804144	Carded	1/8 in	0.688 in	0.590 in	1.653 in	0.984 in	0.591	0.13 lb
80415D	099575804151	Carded	9/64 in	0.688 in	0.590 in	1.653 in	0.984 in	0.591	0.14 lb
80416	099575804168	Carded	5/32 in	0.688 in	0.590 in	1.653 in	0.984 in	0.591	0.14 lb
80417	099575804175	Carded	3/16 in	0.688 in	0.590 in	1.653 in	0.984 in	0.591	0.14 lb
80418	099575804182	Carded	7/32 in	0.688 in	0.590 in	1.653 in	0.984 in	0.591	0.14 lb
80419	099575804199	Carded	1/4 in	0.688 in	0.590 in	1.653 in	0.984 in	0.591	0.14 lb
80420	099575810206	Carded	5/16 in	0.688 in	0.590 in	1.850 in	1.181 in	0.788	0.14 lb
80421	099575804212	Carded	3/8 in	0.750 in	0.750 in	1.850 in	1.181 in	0.788	0.14 lb
80422	099575804229	Carded	2 mm	0.688 in	0.590 in	1.653 in	0.984 in	0.625	0.15 lb
80423	099575804236	Carded	2.5 mm	0.688 in	0.590 in	1.653 in	0.984 in	0.625	0.09 lb
80424	099575804243	Carded	3 mm	0.688 in	0.590 in	1.653 in	0.984 in	0.625	0.11 lb
80425	099575804250	Carded	4 mm	0.688 in	0.590 in	1.653 in	0.984 in	0.625	0.13 lb
80426	099575804267	Carded	5 mm	0.688 in	0.590 in	1.653 in	0.984 in	0.625	0.13 lb
80427	099575804274	Carded	6 mm	0.688 in	0.590 in	1.653 in	0.984 in	0.625	0.13 lb
80428D	099575804281	Carded	7 mm	0.688 in	0.590 in	1.850 in	1.181 in	0.688	0.14 lb
80429	099575804298	Carded	8 mm	0.688 in	0.590 in	1.850 in	1.181 in	0.788	0.14 lb
80430	099575804304	Carded	9 mm	0.750 in	0.750 in	1.968 in	1.181 in	0.906	0.14 lb
80431	099575804311	Carded	10 mm	0.750 in	0.750 in	1.968 in	1.181 in	0.906	0.14 lb
80432	099575804328	Carded	11 mm	0.750 in	0.750 in	1.968 in	1.181 in	0.906	0.14 lb
80433	099575804335	Carded	12 mm	0.750 in	0.750 in	1.968 in	1.181 in	0.906	0.14 lb

3 / 8 "

3

RATCHETS / SOCKETS / DRIVE TOOLS / SETS