

# ETP Steel Liquidtight Fittings

## Type 4QS

### Straight

#### Use:

4QS liquidtight connectors and liquidtight flexible metallic conduit are used in applications where conditions of installation, operation or maintenance require flexibility or protection from liquids, vapors or solids such as: machine tool building, motor and transformer terminations, robotics assembly, air conditioning equipment installation and Class I, Division 2 wiring

#### Features:

- Tapered threaded male hub NPT
- Compact, slim diameter with small turning radius
- Furnished with locknut and sealing ring.
- Liquidtight/Raintight/Oiltight
- Suitable for grounding (through 1 1/4")
- Suitable for wet locations
- Long ferrule prevents pullout and tight bend conduit "pop-out"
- Suitable for use in the following Hazardous Locations:

Class I, Div. 2 per NEC 501.4(B)

Class I, Zone 2 per NEC 505.15(C)(2)

Class II, Div. 2 per NEC 502.4(A)(1)(e)

Class II, Div. 2 per NEC 502.4(B)(2)

Class III, Div. 1 per NEC 503.3(A)(2)

Class III, Div. 2 per NEC 503.3(B)

Intrinsically Safe per NEC 504.20

- Bonding Wedge Locknuts are recommended in Hazardous Locations. See 101 Series on Page DB8.
- Reusable ferrule.

#### Material/Finish:

Steel /Zinc Plated

#### Third Party Certification:



UL Listed: 11853



CSA Certified: 009795

UL Listed liquidtight flexible metal conduit fittings are suitable for grounding in sizes 3/8" through 1 1/4" under NEC 250.118(7)

#### Applicable Third Party Standards:

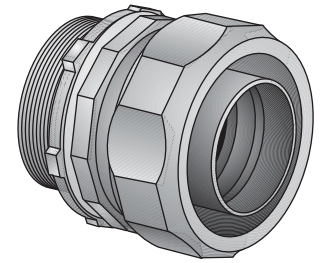
UL Standard: 514B

CSA Standard: C22.2 No. 18

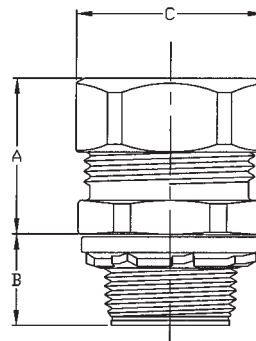
NEMA: FB-1

Federal Spec: W-F-406E

Trade Size (inches)	Catalog Number	Insulated Throat Catalog Number	Dimensions in Inches		
			A	B	C
3/8 (1/2 KO)	4QS-38	4QS-38T	7/8	5/8	1 3/32
1/2	4QS-50	4QS-50T	23/32	5/8	1 3/16
3/4	4QS-75	4QS-75T	13/16	5/8	1 7/16
1	4QS-100	4QS-100T	31/32	21/32	1 3/4
1 1/4	4QS-125	4QS-125T	1 3/16	43/64	2 5/32
1 1/2	4QS-150	4QS-150T	1 9/32	23/32	2 3/8
2	4QS-200	4QS-200T	1 11/32	23/32	2 7/8



Type 4QS-38— Type 4QS-200



# ETP Steel Liquidtight Fittings

## Type 4QS 45° and 90°

### Use:

4QS liquidtight connectors and liquidtight flexible metallic conduit are used in applications where conditions of installation, operation or maintenance require flexibility or protection from liquids, vapors or solids such as: machine tool building, motor and transformer terminations, robotics assembly, air conditioning equipment installation and Class I, Division 2 wiring

### Features:

- Tapered threaded male hub NPT
- Compact, slim diameter with small turning radius
- Furnished with locknut and sealing ring.
- Liquidtight/Raintight/Oiltight
- Suitable for grounding (through 1/4")
- Suitable for wet locations
- Long ferrule prevents pullout and tight bend conduit "pop-out"
- Suitable for use in the following Hazardous Locations:
  - Class I, Div. 2 per NEC 501.4(B)
  - Class I, Zone 2 per NEC 505.15(C)(2)
  - Class II, Div. 2 per NEC 502.4(A)(1)(e)
  - Class II, Div. 2 per NEC 502.4(B)(2)
  - Class III, Div. 1 per NEC 503.3(A)(2)
  - Class III, Div. 2 per NEC 503.3(B)
- Intrinsically Safe per NEC 504.20
- Bonding Wedge Locknuts are recommended in Hazardous Locations. See 101 Series on Page DB8.
- Reusable ferrule.

### Material/Finish:

Body: Malleable Iron /Zinc Plated  
Gland, nut, ferrule and locknut:  
Steel /Zinc Plated

### Third Party Certification:



UL Listed: 11853



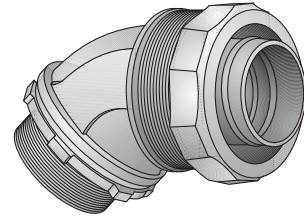
CSA Certified: 009795

UL Listed liquidtight flexible metal conduit fittings from 3/8" through 1 1/4" trade sizes are suitable for grounding under NEC 250.118(7).

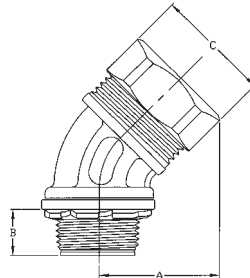
### Applicable Third Party Standards:

UL Standard: 514B  
CSA Standard: C22.2 No. 18  
NEMA: FB-1  
Federal Spec: W-F-406E

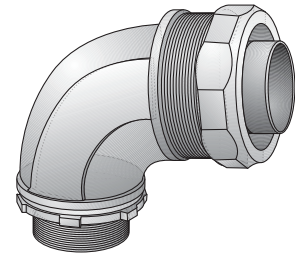
Trade Size (inches)	Catalog Number	Insulated Throat Catalog Number	Dimensions in Inches		
			A	B	C
3/8 (1/2 KO)	4QS-438	4QS-438T	1 1/4	5/8	1 3/32
1/2	4QS-450	4QS-450T	1 3/8	5/8	1 9/16
3/4	4QS-475	4QS-475T	1 1/2	5/8	1 7/16
1	4QS-4100	4QS-4100T	1 13/16	2 1/32	1 3/4
1 1/4	4QS-4125	4QS-4125T	2	1 11/16	2 5/32
1 1/2	4QS-4150	4QS-4150T	2 5/16	2 3/32	2 3/8
2	4QS-4200	4QS-4200T	2 9/16	2 3/32	2 7/8



Type 4QS-438—  
Type 4QS-4200



Trade Size (inches)	Catalog Number	Insulated Throat Catalog Number	Dimensions in Inches			
			A	B	C	D
3/8 (1/2 KO)	4QS-938	4QS-938T	1 19/32	5/8	1 3/32	5/8
1/2	4QS-950	4QS-950T	1 21/32	5/8	1 9/16	5/8
3/4	4QS-975	4QS-975T	1 25/32	5/8	1 7/16	29/32
1	4QS-9100	4QS-9100T	2 3/16	2 1/32	1 3/4	1 3/16
1 1/4	4QS-9125	4QS-9125T	2 3/8	1 11/16	2 5/32	1 1/4
1 1/2	4QS-9150	4QS-9150T	2 5/8	2 3/32	2 3/8	1 3/8
2	4QS-9200	4QS-9200T	3 1/16	2 3/32	2 7/8	1 11/16



Type 4QS-938—  
Type 4QS-9200

