



**Huskie TOOLS**

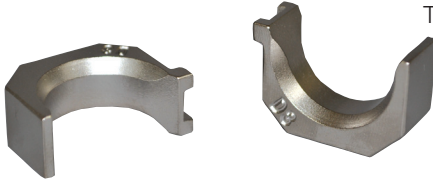
**Huskie Tools Dies**

198 N Brandon Dr.  
Glendale Heights, IL 60139  
Phone: 800-860-6170

www.huskiertools.com

## HT-Series

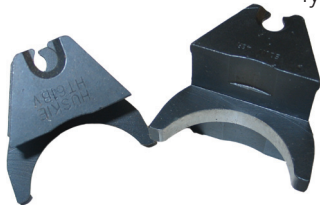
Equivalent to Kearney "O" Type Dies for 4-6 Ton Tools



HUSKIE	KEARNEY Equivalent	HUSKIE	KEARNEY Equivalent	CSA
HT-B	B	HT-510	510 (HEX)	HTCSA-20
HT-D	D	HT-635	635 (HEX)	HTCSA-22
HT-D3	D3	HT-747	747 (HEX)	HTCSA-24
HT-J	J	HT-316	3/16	
HT-K	K	HT-14	1/4	
HT-O	O	HT-516	5/16	
HT-P	P	HT-38	3/8	
HT-T	T	HT-12	1/2	
HT-737	737	HT-916	9/16	
HT-781	781	HT-1932	19/32	
HT-840	840	HT-58-1	5/8-1	
HT-845	845	HT-1116	11/16	

## HT61-Series

Equivalent to Burndy "P" Type Dies for 15 Ton Tools



HUSKIE	BURNDY Equivalent	HUSKIE	BURNDY Equivalent	Huskie	CSA
HT61BP	P39RT	HT61FC	P39ART	HT61PF	CSA-30
HT61BR	P40RT	HT61HJ	P40ART	HT61PK	CSA-30CU
HT61BU	P44RT	HT61FD	P44ART	HT61PO	CSA-32
HT61BV	P46RT	HT61AC	PKR	HT61PP	CSA-32CU
HT61KX	P-724	HT61AJ	PN	HT61PQ	CSA-34
PU-15	DIE ADAPTER			HT61PR	CSA-34CU

## HA60-Series

Equivalent to Alcoa 60 Ton Dies



HUSKIE	ALCOA Equivalent	HUSKIE	ALCOA Equivalent
HA60-01	6010SH	HA60-27	6040AH
HA60-02	6012SH	HA60-28	6074AH
HA60-03	6014SH	HA60-29	6075AH
HA60-04	6016SH	HA60-30	6076AH
HA60-05	6018SH	HA60-40	6007CD
HA60-06	6020SH	HA60-41	6008CD
HA60-07	6074SH	HA60-42	6009CD
HA60-08	6075SH	HA60-43	6010CD
HA60-09	6076SH	HA60-44	6011CD
HA60-20	6020AH	HA60-45	6012CD
HA60-21	6024AH	HA60-46	6013CD
HA60-22	6027AH	HA60-47	6014CD
HA60-23	6030AH	HA60-48	6015CD
HA60-24	6034AH	HA60-49	6016CD
HA60-25	6036AH	HA60-50	6017CD
HA60-26	6038AH		

## HT58-Series

Equivalent to Burndy "W" Type Dies for 4-6 Ton Tools



HUSKIE	BURNDY Equivalent	HUSKIE	BURNDY Equivalent	HUSKIE	BURNDY Equivalent
HT58AE	W-K840	HT58DE	W-236	HT58AW	W-2CRT
HT58BX	W-161	HT58DG	W-238	HT58AU	W-4CRT
HT58BZ	W-162	HT58DH	W-239	HT58AT	W-5CRT
HT58CB	W-163	HT58DK	W-241	HT58AY	W-25RT
HT58CD	W-164	HT58DM	W-243	HT58AZ	W-26RT
HT58CE	W-165	HT58DP	W-245	HT58BA	W-27RT
HT58CF	W-166	HT58DT	W-247	HT58BC	W-28RT
HT58CG	W-167	HT58DV	W-248	HT58BE	W-29RT
HT58CM	W-171	HT58DW	W-249	HT58BF	W-30RT
HT58G	W-BG	HT58KA	W-687	HT58BJ	W-31RT
HT58J	W-C	HT58KH	W-702	HT58BK	W-32RT
HT58AK	W-O	HT58AF	W-L	HT58BL	W-34RT
HT58CUT	CUTTER			HT58DY	W-251

Huskie 6 Ton Die	Burndy 6 Ton Die Equivalent	Nicopress Equivalent
HT58BX	W-161	J
HT58BZ	W-162	M & P
HT58CB	W-163	X
HT58CM	W-171	T

Huskie	CSA
HT58PA	CSA-20
HT58PB	CSA-22
HT58PC	CSA-24

## HTK-Series

Equivalent to Kearney "WH-2" (10.7T) & "WH-3" (12 T) Type Dies



HUSKIE	KEARNEY Equivalent	HUSKIE	KEARNEY Equivalent	HUSKIE	KEARNEY Equivalent	HUSKIE	KEARNEY Equivalent
HTK	BKT	HTK-510	510	HTK-14	1/4	HTK-34H	3/4 (HEX)
HTK-C	C	HTK-572	572	HTK-516	5/16	HTK-2932H	29/32 (HEX)
HTK-D	D	HTK-635	635	HTK-38	3/8	HTK-1516	15/16
HTK-N	N	HTK-727	727	HTK-12	1/2	HTK-1-2H	1-2 (HEX)
HTK-N-2	N (WH-3 Only)	HTK-737	737	HTK-916	9/16	HTK-1-18-2H	1-1/8
HTK-O	O	HTK-747	747	HTK-1932	19/32	HTK-1-516H	1-5/16 (HEX)
HTK-P	P	HTK-781	781	HTK-58-1	5/8-1	HTK-1-12H	1-1/2 (HEX)
HTK-U	U	HTK-840	840	HTK-1116	11/16	HTK-1-12H-3	1-1/2 (WH-3 Only)
						UDK-1	Die Adapter

## HA100-Series

Equivalent to Alcoa 100 Ton Dies



HUSKIE	ALCOA Equivalent	HUSKIE	ALCOA Equivalent	HUSKIE	ALCOA Equivalent
HA100-01	10010SH	HA100-24	10034AH	HA100-41	10010CD
HA100-02	10012SH	HA100-25	10036AH	HA100-42	10009CD
HA100-03	10014SH	HA100-26	10038AH	HA100-43	10010CD
HA100-04	10016SH	HA100-27	10040AH	HA100-44	10011CD
HA100-05	10018SH	HA100-28	10042AH	HA100-45	10012CD
HA100-06	10020SH	HA100-29	10075AH	HA100-46	10013CD
HA100-07	10074SH	HA100-30	10076AH	HA100-47	10014CD
HA100-08	10075SH	HA100-34	10042AH	HA100-48	10015CD
HA100-20	10020AH	HA100-36	10044AH	HA100-49	10016CD
HA100-21	10024AH	HA100-37	10046AH	HA100-50	10017CD
HA100-22	10027AH	HA100-38	10048AH	HA100-51	10018CD
HA100-23	10030AH	HA100-40	10007CD	HA100-52	10019CD
				HA100-53	10020CD

# Huskie Die Chart (Color Code)

Approximate Cu	Conductor Range Al	Die Color Code	Huskie Die Set Catalog Number	Burndy Index	Burndy Die Set Catalog Number	T & B Index
6 AWG	8WG	BLUE	H41AT/HT41GL	7/374	U5CRT/U8CABT	24
4 AWG	6 AWG	GREY	HT41AU/HT41GE	8/346	U4CRT/U6CABT	29
2 AWG		BROWN	HT41AW	10	U2CRT	33
1 AWG	4 AWG	GREEN	HT41AX	11	U1CRT	37
	4 AWG	GREEN	HT41GM	375	U4CABT	37
1/0 AWG	2 AWG	PINK	HT41AY	12	U25RT	42H
	2 AWG	PINK	HT41GF	348	U2CABT	42H
2/0 AWG		BLACK	HT41AZ	13	U26RT	45
3/0 AWG		ORANGE	HT41BA	14	U27RT	50
	1/0 AWG	TAN	HT41EX	296	U25ART	50
4/0 AWG		PURPLE	HT41BC	15	U28RT	54H
	2/0 AWG	OLIVE	HT41EY	297	U26ART	54H
250 MCM		YELLOW	HT41BE	16	U29RT	62
	3/0 AWG	RUBY	HT41GW	467	U27ART	60
300 MCM		WHITE	HT41BF	17	U30RT	66
	4/0 AWG	WHITE	HT41EZ	298	U28ART	66
350 MCM		RED	HT41BJ	18	U31RT	71H
	250 MCM	RED	HT41FW	324	U29ART	71H
400 MCM		BLUE	HT41BK	19	U32RT	76
	300 MCM	BLUE	HT41GZ	470	U30RT	76
500 MCM		BROWN	HT41BL	20	U34RT	87H
	350 MCM	BROWN	HT41FA	299	U3RT	87H
600 MCM	400 MCM	GREEN	HT41HH/HT41BM	472/22	U32ART/U36RT	94H
	500 MCM	PINK	HT41FB	300	U34RT	99H
750 MCM		BLACK	HT41BP	24	U39RT	106H
	600 MCM	BLACK	HT41HG	473	U36ART	106H
	700/750 MCM	YELLOW	HT41LJ	936	U39ART-2	115H

## HT41-Series

HUSKIE	BURNDY Equivalent	HUSKIE	BURNDY Equivalent	HUSKIE	BURNDY Equivalent	HUSKIE	KEARNEY Equivalent
HT41G	U-BG			HT41AT	U5CRT	HT41KA	1/4
HT41J	U-C	HT41DP	U-245	HT41AY	U25RT	HT41KB	3/8
HT41V	U-D	HT41DT	U-247	HT41AZ	U26RT	HT41KC	5/16
HT41X	U-D3	HT41DV	U-248	HT41BA	U27RT	HT41KD	1/2
HT41Y	U-E	HT41DW	U-249	HT41BC	U28RT	HT41KE	9/16
		HT41DY	U-251				
HT41Z	U-F	HT41DZ	U-252	HT41BE	U29RT	HT41KF	19/32
HT41AB	U-H			HT41GF	U2CABT	HT41KG	5/8-1
HT41AF	U-L	HT41EK	U-261	HT41GM	U4CABT	HT41KH	11/16
HT41AG	U-M	HT41FG	U-305	HT41GE	U6CABT	HT41KI	3/4
HT41AJ	U-N	HT41FM	U-316	HT41GL	U8CABT	HT41KK	29/32
		HT41FN	U-317				
HT41AK	U-O	HT41FU	U-321	HT41BF	U30RT	HT41KL	15/16
HT41AM	U-R			HT41BJ	U31RT	HT41KM	1-2
HT41BX	U-161	HT41FX	U-327	HT41BK	U32RT	HT41KN	1-1/8-2
HT41BZ	U-162	HT41GK	U-373	HT41BL	U34RT	HT41KO	1-1/2-2
HT41CB	U-163	HT41GX	U-468	HT41BM	U36RT	HT41KP	510
		HT41HM	U-490				
HT41CD	U-164	HT41JM	U-654	HT41BP	U39RT	HT41KQ	572
HT41CE	U-165			HT41EX	U25ART	HT41KR	635
HT41CF	U-166	HT41JN	U-655	HT41EY	U26ART	HT41KS	737
HT41CG	U-167	HT41JP	U-658	HT41GW	U27ART	HT41KT	747
HT41CJ	U-168	HT41JR	U-659	HT41EZ	U28ART	HT41KU	781
		HT41KJ	U-705				
HT41CK	U-169	HT41LG	U-788	HT41FW	U29ART	HT41KV	BKT
HT41CL	U-170	HT41NC	U-997	HT41GZ	U30ART	HT41AE	840
HT41CT	U-203	HT41ND	U-998	HT41FA	U31ART	HT41U	U
HT41DE	U-236	HT41NH	U-1011	HT41HH	U32ART	HT41KX	727
HT41DF	U-237	HT41AE	U-K840	HT41FB	U34ART		
HT41DG	U-238	HT41AX	U1CRT	HT41HG	U36ART		
HT41DH	U-239	HT41AW	U2CRT	HT41LJ	U39ART2		
HT41DL	U-242	HT41AV	U3CRT	HT41CUT	Cutter Dies		
		HT41AU	U4CRT	HT41TEST	Test Dies		

Huskie	CSA	Huskie	CSA	Huskie	CSA
HT41PA	CSA-20	HT41PL	CSA-20CU	HT41PM	CSA-1
HT41PB	CSA-22	HT41PG	CSA-22CU	HT41PN	CSA-2
HT41PC	CSA-24	HT41PH	CSA-24CU		
HT41PD	CSA-26	HT41PI	CSA-26CU		
HT41PE	CSA-28	HT41PJ	CSA-28CU		
HT41PF	CSA-30W	HT41PK	CSA-30WCU		

Equivalent to Burndy and Kearney "U" Type Dies for 12 Ton Tools



HUSKIE	ALCOA Equivalent	HUSKIE	ALCOA Equivalent
HT4107	74SH-03SH	HT4131	72AH
HT4108	75SH-05SH	HT4132	73AH-08AH
HT4109	76SH	HT4140	07CD
HT4111	11AH	HT4141	08CD
HT4120	20AH-14AH	HT4142	09CD
HT4128	74AH-10AH	HT4155	72SH-01SH
HT4129	75AH-12AH	HT4156	73SH
HT4130	76AH	HT4180	13AH-80EA

## Wire Rope Dies

ITEM #	DESCRIPTION	ALUMINUM	COPPER
18AC	WIRE ROPE DIE 1/8" AC	1/8"	1/8"
316AC	WIRE ROPE DIE 3/16" AC	3/16"	3/16"
14AC	WIRE ROPE DIE 1/4" AC	1/4"	1/4"
516AC	WIRE ROPE DIE 5/16" AC	5/16"	5/16"
38AC	WIRE ROPE DIE 3/8" AC	3/8"	3/8"
716A12C	WIRE ROPE DIE 7/16" A, 1/2" C	7/16"	1/2"
716C	WIRE ROPE DIE 7/16" C		7/16"
12A	WIRE ROPE DIE 1/2" A	1/2"	