

MUFFLERS/ VENTS

PNEUMATICS

BRASS MUFFLERS

Materials:
 Body: Brass
 Element: Sintered Bronze
 Max Operating Pressure: 300PSI
 Temperature: 35° to 300°F

- Application: Designed to diffuse Air & Muffler noise to acceptable levels within OSHA noise requirements.
- Used on exhaust ports, valves, cylinders and air tools.
- Construction: Porous sintered bronze 40 micron filter element secured to a brass body



| PART # | SIZE |
|--------|--------|
| 300020 | 10/32" |
| 300021 | 1/8" |
| 300022 | 1/4" |
| 300023 | 3/8" |
| 300024 | 1/2" |
| 300026 | 3/4" |
| 300028 | 1" |

40 Micron element

STAINLESS MUFFLERS



Materials:
 Body: 303 Grade Stainless Steel
 Element: 316 Grade Stainless Steel
 Max Operating Pressure: 300PSI
 Temperature: 35° to 392°F

| PART # | SIZE |
|--------|--------|
| 300031 | 10/32" |
| 300032 | 1/8" |
| 300033 | 1/4" |
| 300034 | 3/8" |
| 300035 | 1/2" |
| 300036 | 3/4" |
| 300037 | 1" |

BRASS BREATHER VENT



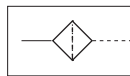
Materials:
 Body: Brass
 Element: Sintered Bronze
 Max Operating Pressure: 150PSI
 Temperature: 35° to 300°F

- Application: Prevents Dirt and Foreign Particles from Entering Ports Open to Atmosphere. Typically used on Acting Cylinders
- Additional Use is Vacuum Relief or Pressure Equalization on Storage Vessels or Tanks
- Construction: Porous Sintered Bronzed 40 Micron Filter Element Secured to a brass body

| PART # | SIZE |
|--------|--------|
| 300000 | 10-32" |
| 300001 | 1/8" |
| 300002 | 1/4" |
| 300003 | 3/8" |
| 300004 | 1/2" |
| 300006 | 3/4" |
| 300008 | 1" |

40 Micron element

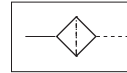
STAINLESS BREATHER VENT



Materials:
 Body: 303 Grade Stainless Steel
 Element: 316 Grade Stainless Steel
 Max Operating Pressure: 150PSI
 Temperature: 35° to 390°F

| PART # | SIZE |
|--------|------|
| 300014 | 1/8" |
| 300015 | 1/4" |
| 300017 | 3/8" |
| 300018 | 1/2" |
| 300019 | 3/4" |
| 300007 | 1" |

PRESSURE SNUBBER



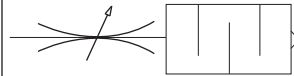
Materials:
 Body: Brass
 Element: Sintered Bronze
 Max Operating Pressure: 9000PSI
 Temperature: 35° to 300°F

- Applications: Protect pressure instruments from sudden pressure surges and fluctuations providing more accurate gauge readings
- Construction: Solid brass housing with porous bronze element
- Can be used for mini in-line filters
- 5 different porosity elements per package, allows each user to adjust snubbing capacity for the specific application

| PART # | SIZE | POROSITY |
|--------|------|----------|
| 28354 | 1/4" | 40 um |
| 28353 | 1/4" | 30 um |
| 28352 | 1/4" | 25 um |
| 28351 | 1/4" | 20 um |
| 28350 | 1/4" | 10 um |

| Recommended Element Porosity Rating | | |
|-------------------------------------|-------|-------------------------------|
| Rating | Color | Recommended Application |
| 40 um | None | Viscous Fluids (over 500 ssu) |

SPEED CONTROL VALVE



Materials:
 Body: Brass
 Element: 40 Micron Sintered Bronze
 Max Operating Pressure: 300PSI
 Temperature: 35° to 300°F

- Application: Provide infinite variation of metering air flow at acceptable sound levels on air valve exhaust ports with complete safety
- The speed of an operating cylinder or air tool may be increased or decreased with the adjusting screw, the final position is locked in place by a lock nut
- Objectionable exhaust air noise is eliminated by the surrounding sleeve - 40 um sintered bronze
- Brass Body
- Max operating pressure: 300PSI
- Operating temperature: 35° F to 300° F

| PART # | SIZE |
|--------|------|
| 940800 | 1/8" |
| 940801 | 1/4" |
| 940803 | 3/8" |
| 940804 | 1/2" |
| 940805 | 3/4" |
| 940806 | 1" |

WARNING: This product can expose you to chemicals, including Chromium, which are known to the State of California to cause cancer and birth defects or other reproductive harm. For more information, visit www.P65Warnings.ca.gov