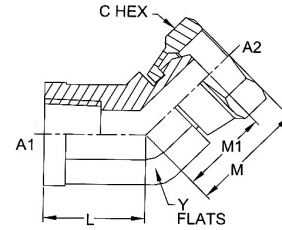
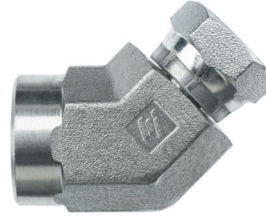


1504-FG

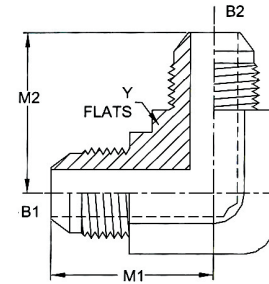
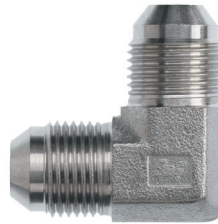
FP-FPS 45 DEG ELBOW



PART NO.	A1 NPTF	A2 NPSM	A2 DRILL	LLGTH	M1 LGTH	MLGTH	CHEX	Y FLATS
1504-02-02-FG	1/8-27	1/8-27	0.120	0.470	0.550	0.700	0.562	0.562
1504-02-04-FG	1/8-27	1/4-18	0.220	0.50	0.76	0.95	0.562	0.750
1504-04-04-FG	1/4-18	1/4-18	0.220	0.69	0.76	0.95	0.688	0.750
1504-04-06-FG	1/4-18	3/8-18	0.320	0.69	0.77	0.98	0.875	0.875
1504-06-04-FG	3/8-18	1/4-18	0.220	0.75	0.77	0.96	0.688	0.875
1504-06-06-FG	3/8-18	3/8-18	0.320	0.750	0.770	0.980	0.875	0.875
1504-06-08-FG	3/8-18	1/2-14	0.460	0.75	0.83	1.11	1.000	1.062
1504-08-06-FG	1/2-14	3/8-18	0.320	0.940	0.950	1.160	0.875	1.062
1504-08-08-FG	1/2-14	1/2-14	0.460	0.940	1.020	1.300	1.000	1.062
1504-12-08-FG	3/4-14	1/2-14	0.460	1.00	0.96	1.24	1.000	1.312
1504-12-12-FG	3/4-14	3/4-14	0.630	1.000	1.010	1.360	1.250	1.312
1504-16-12-FG	1-11/2	3/4-14	0.630	1.19	1.07	1.42	1.250	1.625
1504-16-16-FG	1-11/2	1-11/2	0.800	1.190	1.230	1.580	1.500	1.625
1504-20-20-FG	1 1/4-11 1/2	1 1/4-11 1/2	1.020	1.440	1.350	1.770	1.875	1.875
1504-24-24-FG	1 1/2-11 1/2	1 1/2-11 1/2	1.260	1.46	1.46	1.88	2.125	2.562

2500-FG

MJ-MJ 90 DEG ELBOW



PART NO.	B1 TUBE O.D.	B2 TUBE O.D.	B1 SAE 37Deg	B2 SAE 37Deg	B1 DRILL	B2 DRILL	M1 LGTH	M2 LGTH	Y FLATS
2500-02-02-FG	1/8	1/8	5/16-24	5/16-24	0.062	0.062	0.770	0.770	0.438
2500-03-03-FG	3/16	3/16	3/8-24	3/8-24	0.125	0.125	0.830	0.830	0.438
2500-04-04-FG	1/4	1/4	7/16-20	7/16-20	0.172	0.172	0.890	0.890	0.438
2500-05-04-FG	5/16	1/4	1/2-20	7/16-20	0.234	0.172	0.95	0.95	0.562
2500-05-05-FG	5/16	5/16	1/2-20	1/2-20	0.234	0.234	0.950	0.950	0.562
2500-06-04-FG	3/8	1/4	9/16-18	7/16-20	0.297	0.172	1.06	1.05	0.562
2500-06-05-FG	3/8	5/16	9/16-18	1/2-20	0.297	0.234	1.060	1.050	0.562
2500-06-06-FG	3/8	3/8	9/16-18	9/16-18	0.297	0.297	1.06	1.06	0.562
2500-08-04-FG	1/2	1/4	3/4-16	7/16-20	0.391	0.172	1.25	1.12	0.750
2500-08-06-FG	1/2	3/8	3/4-16	9/16-18	0.391	0.297	1.25	1.14	0.750
2500-08-08-FG	1/2	1/2	3/4-16	3/4-16	0.391	0.391	1.25	1.25	0.750
2500-10-08-FG	5/8	1/2	7/8-14	3/4-16	0.484	0.391	1.450	1.330	0.875
2500-10-10-FG	5/8	5/8	7/8-14	7/8-14	0.484	0.484	1.45	1.45	0.875
2500-12-08-FG	3/4	1/2	1-1/16-12	3/4-16	0.609	0.391	1.660	1.420	1.062
2500-12-10-FG	3/4	5/8	1-1/16-12	7/8-14	0.609	0.484	1.66	1.54	1.062
2500-12-12-FG	3/4	3/4	1-1/16-12	1-1/16-12	0.609	0.609	1.66	1.66	1.062
2500-14-14-FG	7/8	7/8	1-3/16-12	1-3/16-12	0.719	0.719	1.80	1.80	1.312
2500-16-12-FG	1	3/4	1-5/16-12	1-1/16-12	0.844	0.609	1.810	1.760	1.312
2500-16-16-FG	1	1	1-5/16-12	1-5/16-12	0.844	0.844	1.81	1.81	1.312
2500-20-20-FG	1 1/4	1 1/4	1-5/8-12	1-5/8-12	1.078	1.078	2.06	2.06	1.625
2500-24-24-FG	1 1/2	1 1/2	1-7/8-12	1-7/8-12	1.312	1.312	2.33	2.33	1.875
2500-32-32-FG	2	2	2-1/2-12	2-1/2-12	1.781	1.781	3.060	3.060	2.500