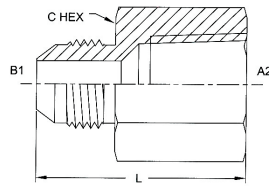
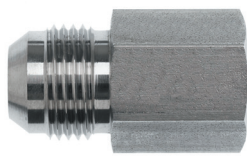


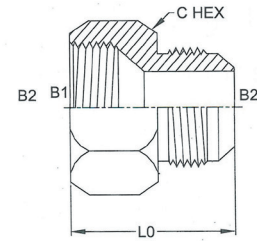
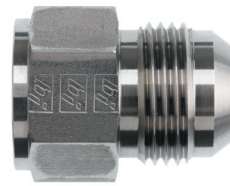
PART NO.	TUBE O.D.	B1 SAE 37Deg	A2 NPTF	B1 DRILL	A2 DRILL	LGTH	C HEX
2404-LL-08-06	1/2	3/4-16	3/8-18	0.391	0.391	4.00	0.812
2404-LL-08-08	1/2	3/4-16	1/2-14	0.391	0.531	4.200	0.875
2404-LL-10-08	5/8	7/8-14	1/2-14	0.484	0.531	4.38	0.875
2404-LL-12-12	3/4	1 1/16-12	3/4-14	0.609	0.719	5.00	1.125
2404-LL-16-12	1	1-5/16-12	3/4-14	0.844	0.719	5.560	1.375
2404-LL-16-16	1	1 5/16-12	1-11/2	0.844	0.938	5.750	1.375

## 2405 MJ-FP STRAIGHT



PART NO.	TUBE O.D.	B1 SAE 37Deg	A2 NPTF	B1 DRILL	LGTH	C HEX
2405-02-02	1/8	5/16-24	1/8-27	0.062	1.120	0.562
2405-02-04	1/8	5/16-24	1/4-18	0.083	1.290	0.750
2405-03-02	3/16	3/8-24	1/8-27	0.125	1.130	0.562
2405-03-04	3/16	3/8-24	1/4-18	0.125	1.310	0.750
2405-04-02	1/4	7/16-20	1/8-27	0.172	1.19	0.562
2405-04-04	1/4	7/16-20	1/4-18	0.172	1.390	0.750
2405-04-06	1/4	7/16-20	3/8-18	0.172	1.450	0.875
2405-04-08	1/4	7/16-20	1/2-14	0.172	1.68	1.125
2405-05-02	5/16	1/2-20	1/8-27	0.234	1.170	0.562
2405-05-04	5/16	1/2-20	1/4-18	0.234	1.390	0.750
2405-05-06	5/16	1/2-20	3/8-18	0.234	1.450	0.875
2405-05-08	5/16	1/2-20	1/2-14	0.234	1.680	1.125
2405-06-02	3/8	9/16-18	1/8-27	0.297	1.190	0.625
2405-06-04	3/8	9/16-18	1/4-18	0.297	1.40	0.750
2405-06-06	3/8	9/16-18	3/8-18	0.297	1.46	0.875
2405-06-08	3/8	9/16-18	1/2-14	0.297	1.690	1.125
2405-06-12	3/8	9/16-18	3/4-14	0.297	1.75	1.375
2405-08-04	1/2	3/4-16	1/4-18	0.391	1.550	0.813
2405-08-06	1/2	3/4-16	3/8-18	0.391	1.560	0.875
2405-08-08	1/2	3/4-16	1/2-14	0.391	1.79	1.125
2405-08-12	1/2	3/4-16	3/4-14	0.391	1.850	1.375
2405-08-16	1/2	3/4-16	1-11/2	0.391	2.100	1.625
2405-10-04	5/8	7/8-14	1/4-18	0.484	1.66	1.125
2405-10-06	5/8	7/8-14	3/8-18	0.484	1.670	0.938
2405-10-08	5/8	7/8-14	1/2-14	0.484	1.89	1.125
2405-10-12	5/8	7/8-14	3/4-14	0.484	1.95	1.375
2405-10-16	5/8	7/8-14	1-11/2	0.484	2.20	1.625
2405-12-08	3/4	1 1/16-12	1/2-14	0.609	2.05	1.125
2405-12-12	3/4	1 1/16-12	3/4-14	0.609	2.06	1.375
2405-12-16	3/4	1 1/16-12	1-11/2	0.609	2.30	1.625
2405-14-08	7/8	1 3/16-12	1/2-14	0.719	2.05	1.375
2405-14-12	7/8	1 3/16-12	3/4-14	0.719	2.06	1.375
2405-16-12	1	1-5/16-12	3/4-14	0.844	2.110	1.375
2405-16-16	1	1 5/16-12	1-11/2	0.844	2.350	1.625
2405-16-20	1	1-5/16-12	1-1/4-11/2	0.844	2.440	2.000
2405-20-16	1 1/4	1 5/8-12	1-11/2	1.078	2.47	1.687
2405-20-20	1 1/4	1 5/8-12	1 1/4-11/2	1.078	2.49	2.000
2405-20-24	1 1/4	1 5/8-12	1 1/2-11/2	1.078	2.500	2.375
2405-24-20	1-1/2	1-7/8-12	1-1/4-11/2	1.312	2.590	2.000
2405-24-24	1 1/2	1 7/8-12	1 1/2-11/2	1.312	2.62	2.375
2405-24-32	1 1/2	1 7/8-12	2-11/2	1.312	2.72	2.875
2405-32-24	2	2 1/2-12	1 1/2-11/2	1.781	2.950	2.625
2405-32-32	2	2 1/2-12	2-11/2	1.781	2.97	2.875
2405-40-40	2-1/2	3-12	2-1/2-8	2.318	2.780	3.250
2405-16-08	1	1-5/16-12	1/2-14	0.844	2.110	1.375
2405-24-16	1-1/2	1-7/8-12	1-11/2	1.312	2.450	2.000

## 2406 FJ-MJ STRAIGHT REDUCER (NON-SWIVEL)



PART NO.	B1 TUBE O.D.	B2 TUBE O.D.	B1 SAE 37Deg	B2 SAE 37Deg	LO LGTH	C HEX	B2 DRILL
2406-03-04	3/16	1/4	3/8-24	7/16-20	0.980	0.500	0.125
2406-04-02	1/4	1/8	7/16-20	5/16-24	1.04	0.563	0.062
2406-04-03	1/4	3/16	7/16-20	3/8-24	1.070	0.562	0.125
2406-04-04	1/4	1/4	7/16-20	7/16-20	1.15	0.562	0.172
2406-04-05	1/4	5/16	7/16-20	1/2-20	1.150	0.625	0.172
2406-04-06	1/4	3/8	7/16-20	9/16-18	1.16	0.625	0.172
2406-04-08	1/4	1/2	7/16-20	3/4-16	1.25	0.812	0.172
2406-05-04	5/16	1/4	1/2-20	7/16-20	1.190	0.625	0.172
2406-05-06	5/16	3/8	1/2-20	9/16-18	1.190	0.625	0.234
2406-05-08	5/16	1/2	1/2-20	3/4-16	1.27	0.812	0.234
2406-06-02	3/8	1/8	9/16-18	5/16-24	1.07	0.688	0.062
2406-06-03	3/8	3/16	9/16-18	3/8-24	1.10	0.688	0.125
2406-06-04	3/8	1/4	9/16-18	7/16-20	1.19	0.688	0.172
2406-06-05	3/8	5/16	9/16-18	1/2-20	1.190	0.688	0.234
2406-06-06	3/8	3/8	9/16-18	9/16-18	1.180	0.688	0.297
2406-06-08	3/8	1/2	9/16-18	3/4-16	1.28	0.812	0.297
2406-06-10	3/8	5/8	9/16-18	7/8-14	1.38	0.937	0.297
2406-08-04	1/2	1/4	3/4-16	7/16-20	1.45	0.875	0.172
2406-08-05	1/2	5/16	3/4-16	1/2-20	1.30	0.875	0.234
2406-08-06	1/2	3/8	3/4-16	9/16-18	1.31	0.875	0.297
2406-08-08	1/2	1/2	3/4-16	3/4-16	1.41	0.875	0.391
2406-08-10	1/2	5/8	3/4-16	7/8-14	1.290	0.937	0.391
2406-08-12	1/2	3/4	3/4-16	1-1/16-12	1.61	1.125	0.391
2406-10-04	5/8	1/4	7/8-14	7/16-20	1.41	1.000	0.172
2406-10-05	5/8	5/16	7/8-14	1/2-20	1.390	1.000	0.234
2406-10-06	5/8	3/8	7/8-14	9/16-18	1.41	1.000	0.297
2406-10-08	5/8	1/2	7/8-14	3/4-16	1.41	1.000	0.391
2406-10-12	5/8	3/4	7/8-14	1-1/16-12	1.71	1.125	0.484
2406-10-16	5/8	1	7/8-14	1-5/16-12	1.76	1.375	0.484
2406-12-04	3/4	1/4	1-1/16-12	7/16-20	1.50	1.250	0.172
2406-12-06	3/4	3/8	1-1/16-12	9/16-18	1.500	1.250	0.297
2406-12-08	3/4	1/2	1-1/16-12	3/4-16	1.68	1.250	0.391
2406-12-10	3/4	5/8	1-1/16-12	7/8-14	1.68	1.250	0.484
2406-12-12	3/4	3/4	1-1/16-12	1-1/16-12	1.77	1.250	0.609
2406-12-16	3/4	1	1-1/16-12	1-5/16-12	1.817	1.375	0.609
2406-12-20	3/4	1-1/4	1-1/16-12	1-5/8-12	1.71	1.687	0.609
2406-14-04	7/8	1/4	1-3/16-12	7/16-20	1.52	1.375	0.172
2406-14-06	7/8	3/8	1-3/16-12	9/16-18	1.59	1.375	0.297
2406-14-08	7/8	1/2	1-3/16-12	3/4-16	1.690	1.375	0.391
2406-14-10	7/8	5/8	1-3/16-12	7/8-14	1.73	1.375	0.484
2406-14-12	7/8	3/4	1-3/16-12	1-1/16-12	1.840	1.375	0.609
2406-14-16	7/8	1	1-3/16-12	1-5/16-12	2.000	1.375	0.719
2406-16-04	1	1/4	1-5/16-12	7/16-20	1.840	1.500	0.172
2406-16-06	1	3/8	1-5/16-12	9/16-18	1.84	1.500	0.297
2406-16-08	1	1/2	1-5/16-12	3/4-16	1.72	1.500	0.391
2406-16-10	1	5/8	1-5/16-12	7/8-14	1.79	1.500	0.484
2406-16-12	1	3/4	1-5/16-12	1-1/16-12	1.90	1.500	0.609
2406-16-14	1	7/8	1-5/16-12	1-3/16-12	1.910	1.500	0.719
2406-16-20	1	1-1/4	1-5/16-12	1-5/8-12	1.71	1.688	0.844
2406-16-24	1	1-1/2	1-5/16-12	1-7/8-12	2.10	2.000	0.844
2406-20-06	1-1/4	3/8	1-5/8-12	9/16-18	1.670	2.000	0.297
2406-20-08	1-1/4	1/2	1-5/8-12	3/4-16	1.840	2.000	0.391
2406-20-10	1-1/4	5/8	1-5/8-12	7/8-14	1.920	2.000	0.484
2406-20-12	1-1/4	3/4	1-5/8-12	1-1/16-12	2.000	2.000	0.609

Continued...