

Type 12 Mild Steel Junction Box *1414 Series*

Lift-Off Cover with Clamps



Application

- Designed for use as instrument enclosures, electric, hydraulic or pneumatic control housings, electrical junction boxes or terminal wiring enclosures.
- Provides a degree of protection from falling dirt, dust, oil and water.

Standards

- UL 508 Type 12 and 13
- CSA Type 12 and 13
- Complies with
 - NEMA Type 12 and 13
 - JIC EGP-1-1967 unless marked¹
 - IEC 60529, IP54

Construction

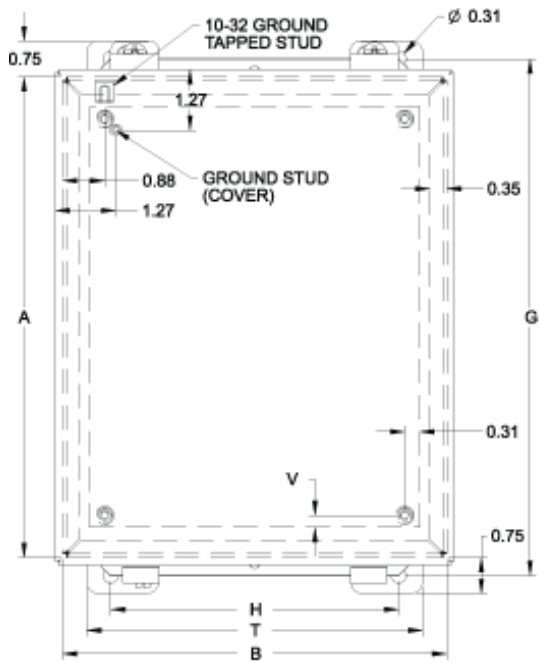
- Body formed from 16 gauge or 14 gauge steel. Covers are formed from 14 gauge steel.
- Smooth, continuously welded seams without knockouts, cutouts or holes.
- Welded brackets provide for enclosure mounting.
- Lift off cover is secured with stainless steel clamps and plated steel screws and retained with a plated chain when open.
- Seamless poured-in place gasket.
- Models larger than 4" x 4" include a removable 14 gauge inner panel.
- Internal threaded weld studs are provided for mounting inner panels.
- A bonding stud is provided on the door and a grounding stud is provided on the enclosure.

Finish

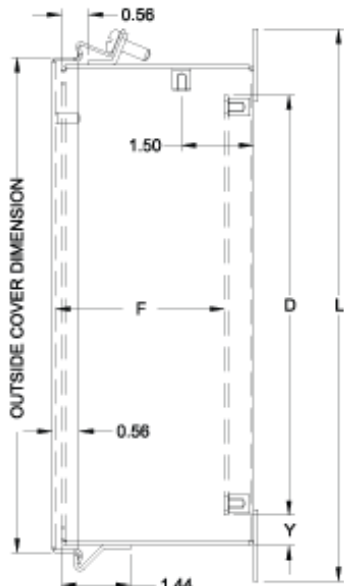
- Cover and enclosure are phosphatized and finished in ANSI 61 gray recoatable powder coating.
- Removable inner panel is finished in white powder coating.

Accessories

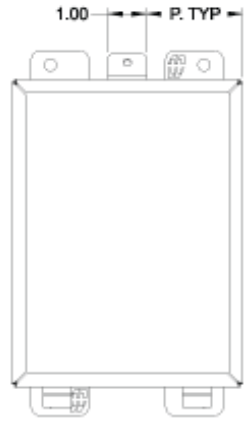
- Inner Panels
- Door Clamping Hardware
- Heaters
- Terminal Kit Assemblies
- Swing Panel Kit
- Ventilation
- Filtered Fans
- Type 1 Louvered Ventilating Plates
- Temperature Controls



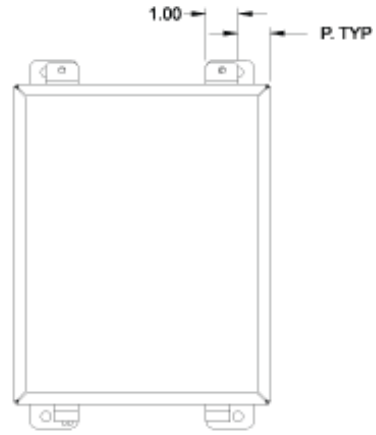
Front View



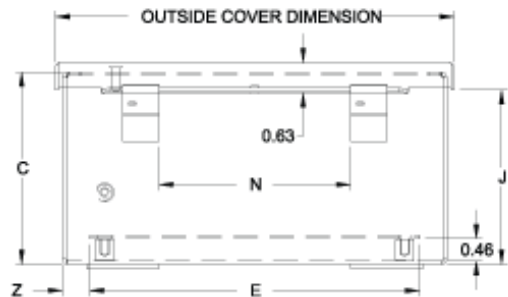
Side View



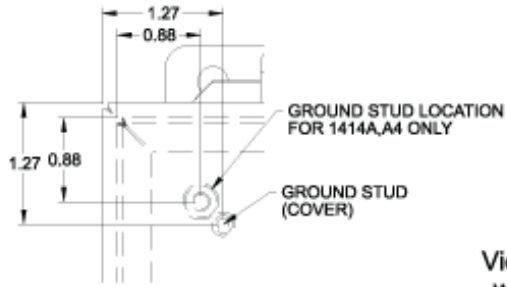
View showing clamp location when one clamp is used



View showing clamp location when two clamps are used (where B=8 or more)



Bottom View



| Part No. | Overall Dimensions | | | | | | | | | | Cover Dimensions | | | | | | Ship Wt. (lbs) | | |
|---------------------|--------------------|-------|-------|-------|-------|------|-------|-------|------|-------|------------------|-------|-------|------|-------|------|----------------|------|----|
| | A | B | C | D | E | F | G | H | J | L | N | P | T | V | Y | Z | | | |
| 1414A ¹ | 4.00 | 4.00 | 3.00 | - | - | - | 4.75 | 2.00 | 2.64 | 5.50 | 1.31 | 4.31 | 4.31 | 1.50 | 3.00 | - | - | - | 2 |
| 1414C ¹ | 6.00 | 4.00 | 3.00 | 4.88 | 2.88 | 2.51 | 6.75 | 2.00 | 2.64 | 7.50 | 1.31 | 6.31 | 4.31 | 1.50 | 3.00 | 0.31 | 0.56 | 0.56 | 3 |
| 1414G | 8.00 | 6.00 | 3.50 | 6.75 | 4.88 | 3.01 | 8.75 | 4.00 | 3.14 | 9.50 | 2.88 | 8.31 | 6.31 | 2.50 | 5.00 | 0.25 | 0.63 | 0.56 | 7 |
| 1414A4 ¹ | 4.00 | 4.00 | 4.00 | - | - | - | 4.75 | 2.00 | 3.64 | 5.50 | 1.31 | 4.31 | 4.31 | 1.50 | 3.00 | - | - | - | 3 |
| 1414C4 ¹ | 6.00 | 4.00 | 4.00 | 4.88 | 2.88 | 3.51 | 6.75 | 2.00 | 3.64 | 7.50 | 1.31 | 6.31 | 4.31 | 1.50 | 3.00 | 0.31 | 0.56 | 0.56 | 4 |
| 1414E | 6.00 | 6.00 | 4.00 | 4.88 | 4.88 | 3.51 | 6.75 | 4.00 | 3.64 | 7.50 | 2.88 | 6.31 | 6.31 | 2.50 | 5.00 | 0.31 | 0.56 | 0.56 | 5 |
| 1414I | 10.00 | 8.00 | 4.00 | 8.75 | 6.88 | 3.51 | 10.75 | 6.00 | 3.64 | 11.50 | 4.00 | 10.31 | 8.31 | 1.00 | 7.00 | 0.25 | 0.63 | 0.56 | 10 |
| 1414K | 12.00 | 10.00 | 5.00 | 10.75 | 8.88 | 4.51 | 12.75 | 8.00 | 4.64 | 13.50 | 6.00 | 12.31 | 10.31 | 1.00 | 9.00 | 0.25 | 0.63 | 0.56 | 13 |
| 1414M6 | 14.00 | 12.00 | 6.00 | 12.75 | 10.88 | 5.51 | 14.75 | 10.00 | 5.64 | 15.50 | 8.00 | 14.31 | 12.31 | 1.00 | 11.00 | 0.25 | 0.63 | 0.56 | 19 |
| 1414O6 | 16.00 | 14.00 | 6.00 | 14.75 | 12.88 | 5.51 | 16.75 | 12.00 | 5.64 | 17.50 | 10.00 | 16.31 | 14.31 | 1.00 | 13.00 | 0.25 | 0.63 | 0.56 | 23 |
| 1414M8 | 14.00 | 12.00 | 8.00 | 12.75 | 10.88 | 7.51 | 14.75 | 10.00 | 7.64 | 15.50 | 8.00 | 14.31 | 12.31 | 1.00 | 11.00 | 0.25 | 0.63 | 0.56 | 20 |
| 1414O10 | 16.00 | 14.00 | 10.00 | 14.75 | 12.88 | 9.51 | 16.75 | 12.00 | 9.64 | 17.50 | 10.00 | 16.31 | 14.31 | 1.00 | 13.00 | 0.25 | 0.63 | 0.56 | 25 |

¹ Does not meet JIC requirements

Data subject to change without notice

