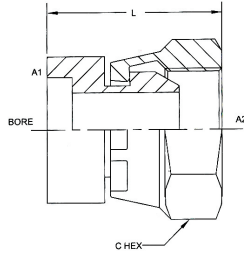
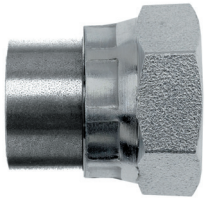


# 0800 BORE-FPS STRAIGHT

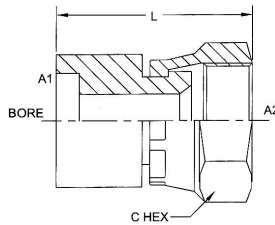
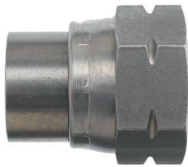


**PART NO. TUBE O.D. A1 BORE A2 NPSM LLGTH C HEX**

0800-08-06	1/2	0.506	3/8-18	1.023	0.875		
0800-10-08	5/8-1/2	.631	1/2-14	1.19	1.00		

PART NO.	A1 NPTF	A2 NPSM	A1 DRILL	A2 DRILL	L1 LGTH	LLGTH	C HEX	C1 HEX
1404-12-06	3/4-14	3/8-18	0.719	0.340	1.56	1.77	1.125	0.875
1404-12-08	3/4-14	1/2-14	0.719	0.44/0.48	1.65	1.93	1.125	1.000
1404-12-12	3/4-14	3/4-14	0.63	0.63	1.75	2.08	1.250	1.250
1404-12-16	3/4-14	1-11/2	0.719	0.780	1.81	2.16	1.500	1.500
1404-12-20	3/4-14	1 1/4-1 1/2	0.719	1.085	1.86	2.28	1.875	1.875
1404-16-06	1-11/2	3/8-18	0.938	0.320/0.340	1.830	2.040	1.500	0.875
1404-16-08	1-11/2	1/2-14	0.938	0.460	1.910	2.160	1.375	1.000
1404-16-12	1-11/2	3/4-14	0.938	0.610	1.94	2.29	1.500	1.250
1404-16-16	1-11/2	1-11/2	0.938	0.780	2.00	2.35	1.500	1.500
1404-16-20	1-11/2	1-1/4-11/2	0.938	0.938	2.050	2.470	1.875	1.875
1404-16-24	1-11/2	1-1/2-11/2	0.938	1.250	2.170	2.550	2.125	2.125
1404-20-16	1 1/4-11/2	1-11/2	1.250	0.78/0.80	2.050	2.400	1.875	1.500
1404-20-20	1 1/4-11/2	1 1/4-11/2	1.250	1.01/1.03	2.100	2.520	1.875	1.875
1404-20-24	1 1/4-11/2	1 1/2-11/2	1.250	1.250	2.09	2.47	2.125	2.125
1404-24-20	1 1/2-11/2	1 1/4-11/2	1.500	1.010	2.120	2.540	2.125	1.875
1404-24-24	1-1/2-11/2	1-1/2-11/2	1.500	1.250/1.270	2.270	2.690	2.125	2.125
1404-32-32	2-11/2	2-11/2	1.938	1.72	2.40	2.82	2.625	2.625

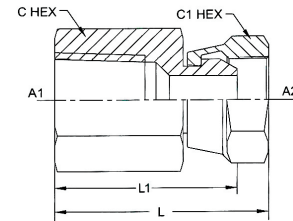
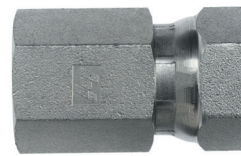
# 0900 BORE-FJS STRAIGHT



**PART NO. TUBE O.D. A1 BORE A2 THREAD LLGTH C HEX**

0900-04-04	1/4	0.256	7/16-20	0.900	0.562		
0900-06-06	3/8-3/8	.375	9/16-18	1.10	.6875		
0900-08-08	1/2	0.506	3/4-16	1.300	0.875		
0900-10-10	5/8-5/8	.628	7/8-14	1.40	1.00		
0900-12-12	3/4	0.757	1-1/16-12	1.625	1.250		
0900-16-16	1	1.006	1-5/16-12	1.500	1.500		
0900-20-20	1 1/4	1.258	1-5/8-12	1.950	2.000		

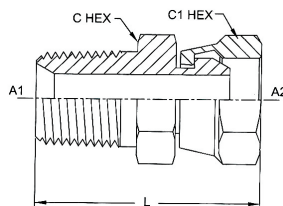
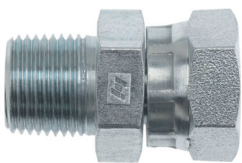
# 1405 FP-FPS STRAIGHT



**PART NO. A1 NPTF A2 NPSM A2 DRILL L1 LGTH LLGTH C HEX C1 HEX**

1405-02-02	1/8-27	1/8-27	0.110	0.88	1.02	0.562	0.562
1405-02-04	1/8-27	1/4-18	0.220	1.10	1.29	0.688	0.688
1405-04-02	1/4-18	1/8-27	0.110	1.190	1.330	0.688	0.5625
1405-04-04	1/4-18	1/4-18	0.220	1.230	1.420	0.688	0.688
1405-04-06	1/4-18	3/8-18	0.32/0.34	1.270	1.480	0.688	0.875
1405-06-04	3/8-18	1/4-18	0.21/0.23	1.290	1.480	0.875	0.688
1405-06-06	3/8-18	3/8-18	0.340	1.31	1.52	0.875	0.875
1405-06-08	3/8-18	1/2-14	0.460	1.500	1.780	0.875	1.000
1405-08-04	1/2-14	1/4-18	0.220	1.560	1.750	1.000	0.688
1405-08-06	1/2-14	3/8-18	0.32/0.36	1.45	1.66	1.000	0.875
1405-08-08	1/2-14	1/2-14	0.460	1.560	1.840	1.000	1.000
1405-08-12	1/2-14	3/4-14	0.635	1.62	1.97	1.250	1.250
1405-12-08	3/4-14	1/2-14	0.440/0.480	1.630	1.910	1.250	1.000
1405-12-12	3/4-14	3/4-14	0.620	1.620	1.970	1.250	1.250
1405-12-16	3/4-14	1-11/2	0.780	1.830	2.180	1.500	1.500
1405-16-12	1-11/2	3/4-14	.61/.63	1.900	2.250	1.500	1.250
1405-16-16	1-11/2	1-11/2	0.780	2.00	2.35	1.500	1.500
1405-20-20	1-1/4-11/2	1-1/4-11/2	1.020	1.980	2.400	1.875	1.875
1405-24-24	1-1/2-11/2	1-1/2-11/2	1.260	2.100	2.520	2.125	2.125
1405-32-32	2-11/2	2-11/2	1.720/1.740	2.250	2.670	2.625	2.625

# 1404 MP-FPS STRAIGHT



**PART NO. A1 NPTF A2 NPSM A1 DRILL A2 DRILL L1 LGTH LLGTH C HEX C1 HEX**

1404-02-02	1/8-27	1/8-27	0.188	.11/.13	0.94	1.08	0.562	0.562
1404-02-04	1/8-27	1/4-18	0.188	0.21/0.23	1.05	1.24	0.688	0.688
1404-04-02	1/4-18	1/8-27	0.281	0.138	1.187	1.320	0.688	0.562
1404-04-04	1/4-18	1/4-18	0.281	0.220	1.23	1.42	0.688	0.688
1404-04-06	1/4-18	3/8-18	0.281	0.281	1.310	1.520	0.812	0.875
1404-04-08	1/4-18	1/2-14	0.281	0.440	1.440	1.700	1.000	1.000
1404-06-04	3/8-18	1/4-18	0.406	0.220	1.30	1.49	0.750	0.688
1404-06-06	3/8-18	3/8-18	0.406	0.340	1.30	1.52	0.875	0.875
1404-06-08	3/8-18	1/2-14	0.406	0.460	1.42	1.70	1.000	1.000
1404-08-04	1/2-14	1/4-18	0.531	0.220	1.52	1.71	0.875	0.688
1404-08-06	1/2-14	3/8-18	0.531	0.340	1.56	1.77	0.875	0.875
1404-08-08	1/2-14	1/2-14	0.531	0.460	1.61	1.89	1.000	1.000
1404-08-12	1/2-14	3/4-14	0.531	0.620	1.740	2.090	1.250	1.250

Continued...