



Main

Product	Single Throw Safety Switch
Duty Rating	Heavy duty
Device Application	Heavy application
Disconnect Type	Non-fusible disconnect
Factory Installed Neutral	None
Phase	3 phase
Number of Poles	3
Current Rating	1200 A
Voltage Rating	600 V AC/DC
Enclosure Rating	NEMA 3R galvanized steel
Motor power hp	50 Hp at 600 V AC 50-60 Hz for 1 phase motors 500 Hp at 600 V AC 50-60 Hz for 3 phase motors 50 hp at 600 V DC

Complementary

Mounting Type	Surface
Electrical Connection	Lugs
Wiring configuration	3-wire
Wire Size	AWG 3/0...750 kcmil copper or aluminium
Tightening torque	375 lbf.in (42.37 N.m) 0.13...0.59 in ² (85.01...380 mm ²) (AWG 3/0...750 kcmil)
Depth	17.75 in (450.85 mm)
Width	36.62 in (930.15 mm)
Height	69.13 in (1755.90 mm)
Net Weight	363.98 lb(US) (165.1 kg)

Environment

Certifications	UL listed file E2875
----------------	----------------------

Ordering and shipping details

Category	00054-H&HU SW,NEMA3R,400-1200A
Discount Schedule	DE1
GTIN	785901259367
Returnability	Yes
Country of origin	US

Packing Units

Unit Type of Package 1	PCE
Number of Units in Package 1	1
Package 1 Height	73.82 in (187.5 cm)
Package 1 Width	30.00 in (76.2 cm)
Package 1 Length	37.99 in (96.5 cm)
Package 1 Weight	364.00 lb(US) (165.108 kg)

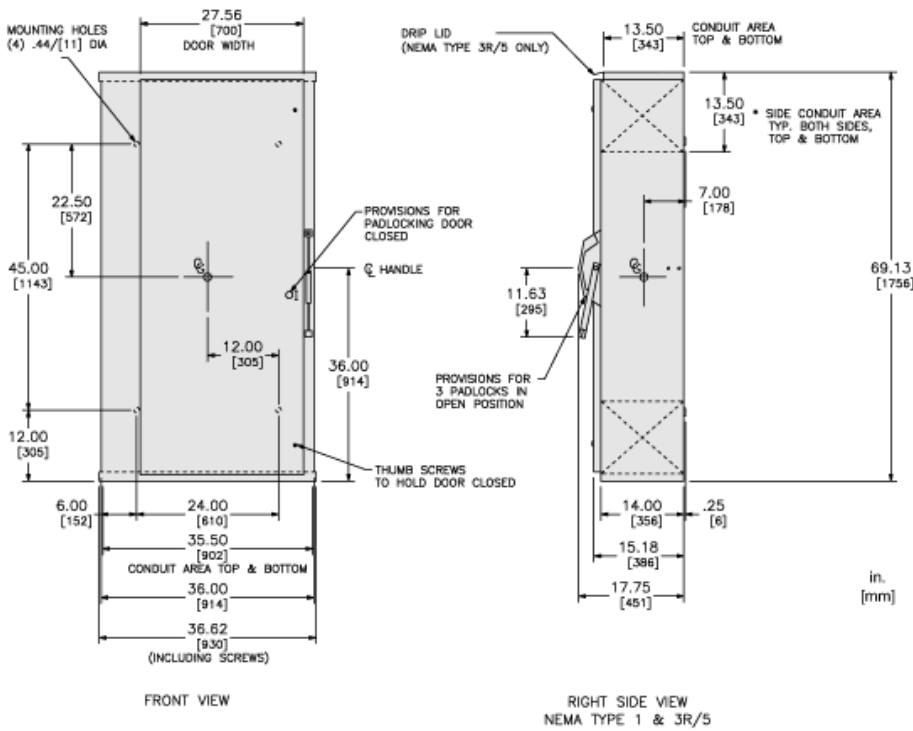
Offer Sustainability

Sustainable offer status	Green Premium product
California proposition 65	WARNING: This product can expose you to chemicals including: Lead and lead compounds, which is known to the State of California to cause cancer and birth defects or other reproductive harm. For more information go to www.P65Warnings.ca.gov
REACH Regulation	REACH Declaration
EU RoHS Directive	Compliant EU RoHS Declaration
Mercury free	Yes
China RoHS Regulation	China RoHS Declaration
RoHS exemption information	Yes
Environmental Disclosure	Product Environmental Profile
PVC free	Yes
Halogen content performance	Halogen free plastic parts product

Contractual warranty

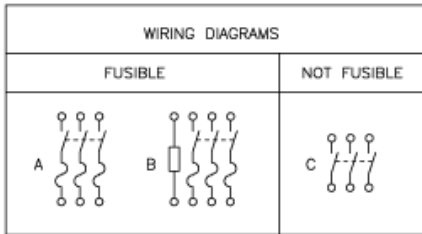
Warranty	18 months
----------	-----------

Approximate Dimensions



CATALOG NUMBER	VOLTAGE RATINGS	WIRING DIAG.	3 PHASE HORSEPOWER RATINGS						DC HORSEPOWER RATINGS			
			240VAC		480VAC		600VAC		250VDC		600VDC	
			STD	MAX.	STD	MAX.	STD	MAX.	STD	MAX.	STD	MAX.
H32B	240VAC;250VDC	A	100	250	-	-	-	-	50	50	-	-
H32BR	240VAC;250VDC	A	100	250	-	-	-	-	50	50	-	-
H32BN	240VAC;250VDC	B	100	250	-	-	-	-	50	50	-	-
H32BNR	240VAC;250VDC	B	100	250	-	-	-	-	50	50	-	-
H36B	600VAC;600VDC	A	100	250	200	500	250	500	-	-	50	50
H36BR	600VAC;600VDC	A	100	250	200	500	250	500	-	-	50	50
H36BN	600VAC;600VDC	B	100	250	200	500	250	500	-	-	50	50
H36BNR	600VAC;600VDC	B	100	250	200	500	250	500	-	-	50	50
HU36B	600VAC;600VDC	C	100	100	-	500	-	500	-	-	50	50
HU36BR	600VAC;600VDC	C	100	100	-	500	-	500	-	-	50	50

Wiring Diagrams



TERMINAL LUGS			
AMPERES	MAX. WIRE	MIN. WIRE	TYPE
1200	(4)750 KCMIL	(4)#3/0 AWG	75°C AL OR CU

FUUSE PROVISIONS			
AMPERES	TYPE	AMPERES	TYPE
1200	CLASS "L"	800	CLASS "L"